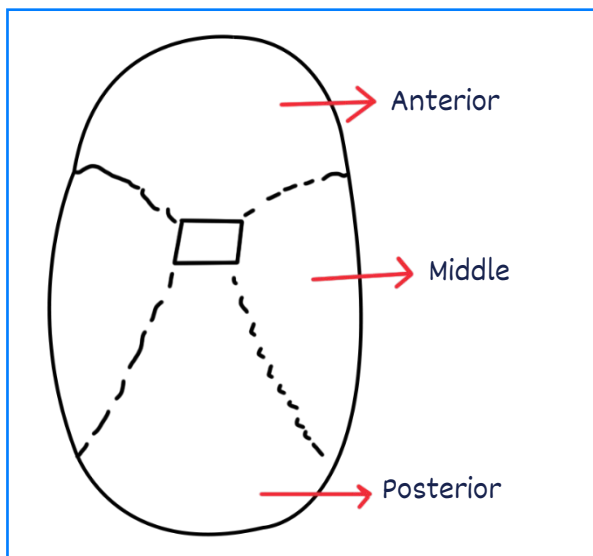
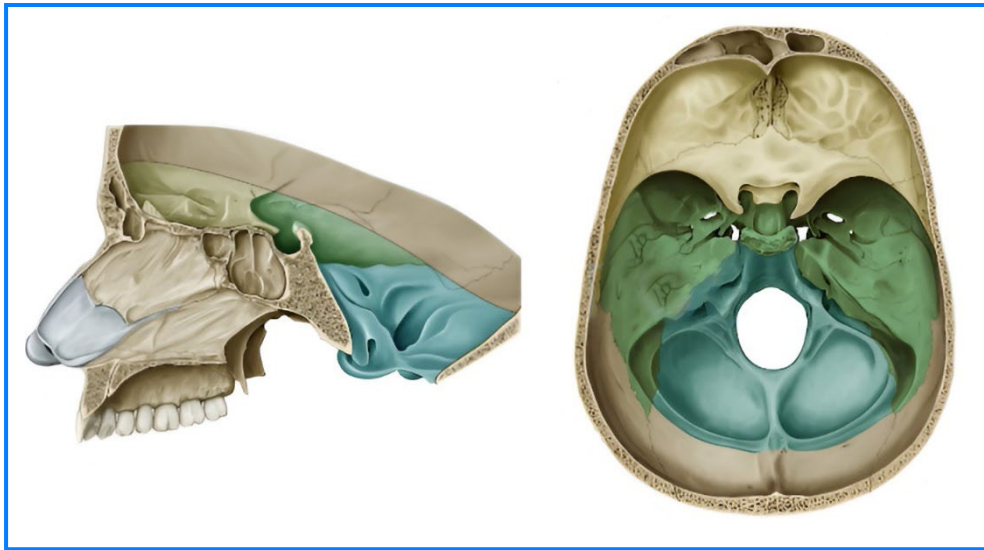


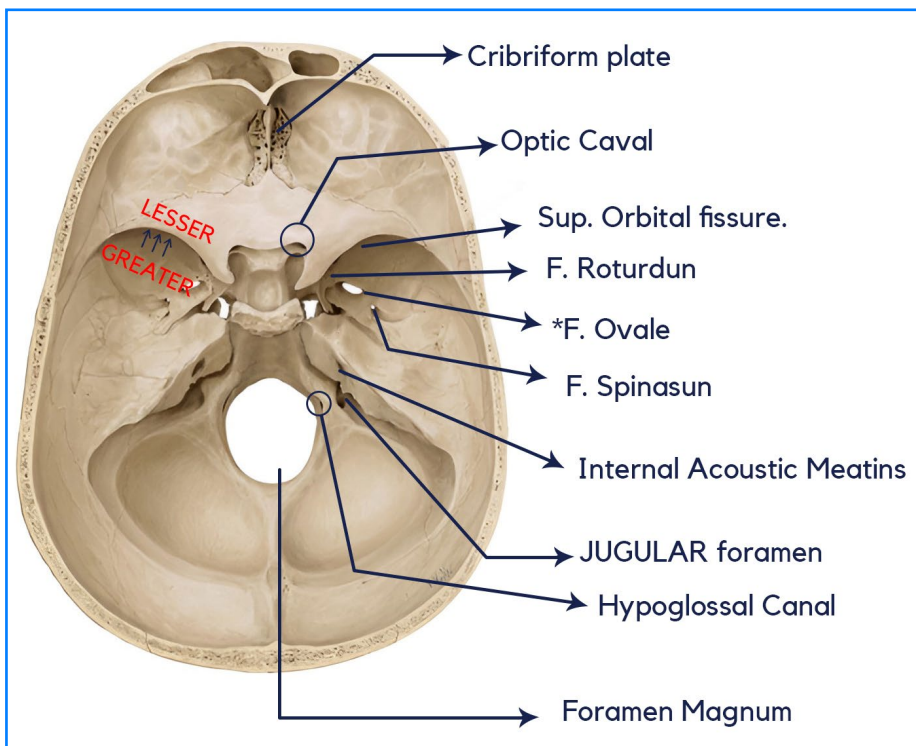
CRANIAL FOSSA AND CRANIAL FORAMEN

Cranial fossae

00:01:53



- Openings are called foramens.



Foramens	Structures passing through items
• Cribriform plate	CN I
• Optic canal	CN II, Ophthalmic artery (ICA)
• Superior Orbital Fissure [between the greater & lesser wings]	III, IV, VI, V ₁ (branches), Ophthalmic vein
• Foramen Rotundum	V ₂
• Foramen Ovale	V ₃
• Foramen Spinosum	Nervous spinosus, Middle meningeal artery.
• Internal Acoustic Meatus	VII, VIII, Labyrinthine vessels
• Jugular Foramen	IX, X, XI, inferior petrosal sinus, sigmoid sinus

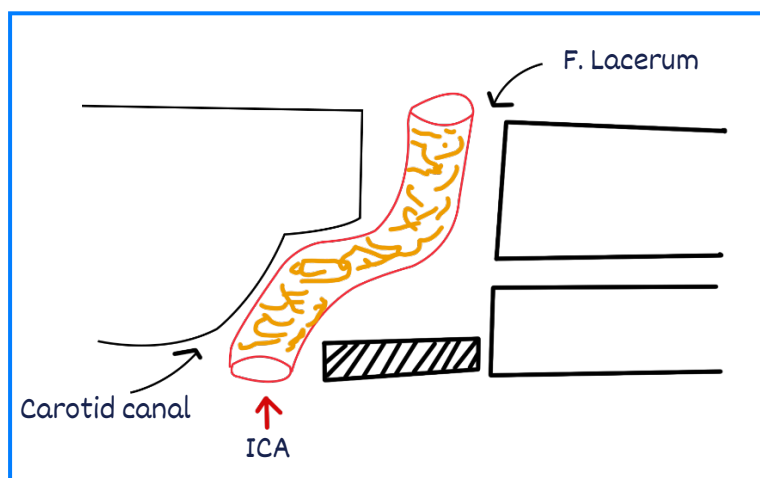
- Structures passing through Foramen ovale:
 - M – Mandibular nerve (V₃)
 - A – Accessory meningeal artery
 - L – Lesser petrosal nerve
- E – Emissary veins.
- The chief nerve [nervous spinosus] and the chief artery [middle meningeal artery] to the dura matter pass through the **FORAMEN SPINOSUM**.

- Middle Meningeal Artery **Rupture** → Epidural Haemorrhage.
- Hypoglossal canal – XII
- Foramen Magnum – Medulla
 - Vertebral artery
 - Anterior and posterior spinal arteries
 - Apical ligament of dens
 - Tectorial membrane

Foramen lacerum

00:24:47

- Internal carotid artery (only in superior part)



- Around the internal carotid artery, sympathetic plexus of nerves is present, from where the **DEEP PETROSAL NERVE** begins.